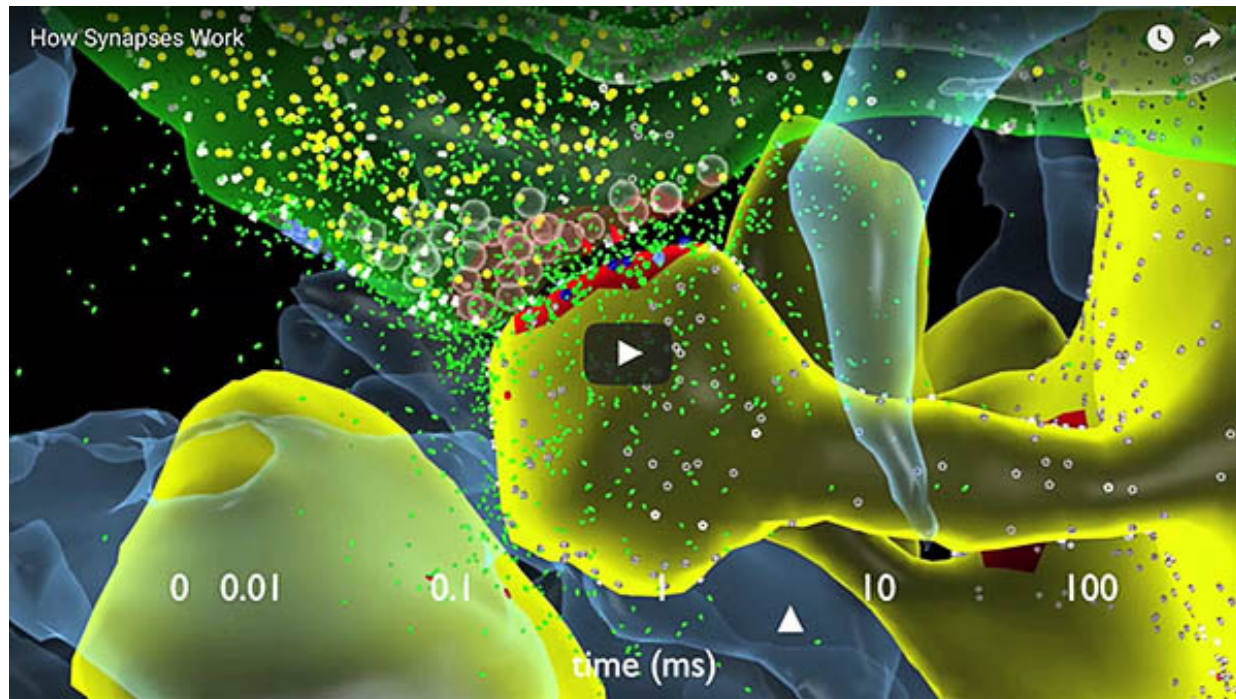


---

## Science News

---



### Memory capacity of brain is 10 times more than previously thought

[Terry Sejnowski](#) and colleagues published work in *eLife* in January 2016 demonstrating critical insight into the size of neural connections and putting the memory capacity of the brain far higher than common estimates. These connections, called synapses, can cause a range of neurological diseases when they malfunction. Sejnowski's team showed that there are many more discrete sizes of synapses than previously thought, offering a new model for the brain's information capacity. Aside from helping to better understand the brain, the discovery could also aid computer scientists in building ultraprecise and energy-efficient computers.

[SEE PRESS RELEASE »](#)

VIEW MEDIA COVERAGE:

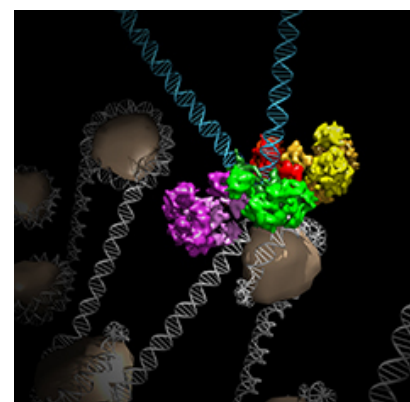
**Forbes**

**SCIENTIFIC  
AMERICAN**

---

### Protein structure illuminates how viruses take over cells

Using cutting-edge imaging technology called cryoEM, [Dmitry Lyumkis](#) and collaborators have determined the structure of a protein complex that lets viruses similar to HIV establish permanent infections within their hosts. This work may have implications not only for treating diseases like HIV, but also for improving gene therapy methods to deliver new DNA to patients with genetic mutations.



[SEE PRESS RELEASE »](#)

VIEW MEDIA COVERAGE:

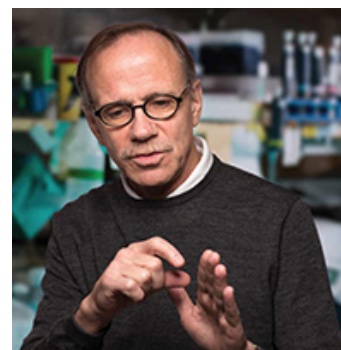
**PHYS**  **ORG**

---

## Congratulations

---

## Three Salk scientists make Thomson Reuters' list of "World's Most Influential Scientific Minds"



Institute scientists [Joanne Chory](#), [Joseph Ecker](#) and [Rusty Gage](#) have been named to the 2015 list of "The World's Most Influential Scientific Minds" by Thomson Reuters. Reuters, a multinational mass media and information firm, compiles an annual list of scientists who published the greatest number of articles ranking among the top one percent by citations received in their respective fields. There are 3,126 named on the "Highly Cited Researchers" list this year.

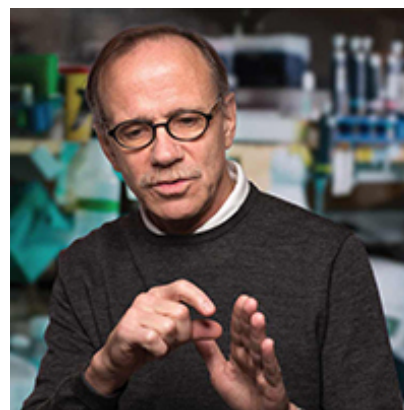
Salk Institute President Elizabeth Blackburn said the inclusion of the Salk faculty was a recognition of the value and influence of the Institute's research. "This recognition is an honor for our faculty and a testament to the extraordinary level of science taking place at Salk," says Blackburn.

[SEE PRESS RELEASE »](#)

---

## Rusty Gage elected to NAS Council

[Rusty Gage](#) was recently elected to the National Academy of Sciences' governing Council along with three other eminent scientists. The positions are effective July 1, 2016. Members of the prestigious organization are selected for outstanding contributions to biological research and include 190 Nobel Prize winners. NAS aims to encourage education and research, recognize outstanding contributions to knowledge and increase public understanding of science, engineering and medicine.



[SEE PRESS RELEASE »](#)

---

## Salk scientist named a Damon Runyon Fellow

[Corina Antal](#), a Salk research associate in [Ronald Evans'](#) lab, has been named a Damon Runyon Fellow by the Damon Runyon Cancer Research Foundation. Antal, who recently made *Forbes'* "30 under 30" list, is one of 19 recipients of this prestigious four-year award, which supports innovative early career researchers. She will receive \$208,000 for her work on developing ways to increase the efficacy of pancreatic cancer therapies.



[SEE PRESS RELEASE »](#)

---

## Events

---

### Springing into Salk

The Salk Institute kicks off the first half of 2016 with a full roster of events open to the public. Won't you join us?



BE AMAZED AND INSPIRED

Three concerts remain in the third season of the [Salk Science & Music Series](#). Each



features a stunning performance by an established or emerging musician, as well as a riveting talk by a Salk scientist about the latest discoveries from the lab. **Tickets are now on sale at [www.salk.edu/music](http://www.salk.edu/music).**

February 21, 2016 **SOLD OUT**

**[Cicely Parnas \(cello\) and Noreen Cassidy-Polera \(piano\)](#)** with Beverly Emerson

March 20, 2016

**[Julia Bullock \(soprano\) and Renate Rohlfing \(piano\)](#)** with Geoffrey Wahl

April 24, 2016

**[Sean Chen and Karen Joy Davis \(duo piano\)](#)** with Julie Law

---

## TUESDAY, MARCH 22, 2016

Professor [Joseph Ecker](#) will discuss “**Exploring the Epigenome: Implications for Human Health**,” at the next Back to Basics lecture from 3 to 5 p.m. March 22 in the Conrad T. Prebys Auditorium. Admission is free.



**[RSVP »](#)**

Jennifer Rothrock at (858) 500-4881, [jrothrock@salk.edu](mailto:jrothrock@salk.edu) or [www.salk.edu/rsvp](http://www.salk.edu/rsvp)

---

## WEDNESDAY, MARCH 30, 2016

[Salk's Women & Science](#) hosts a lively program March 30 featuring a conversation with new Institute President Elizabeth Blackburn and a ceremony to recognize recipients of the Women & Science Special Awards Initiative. The evening concludes with a supper reception. To learn more about the program and for necessary reservations, contact Betsy Collins, director of Donor Relations and Stewardship, at (858) 453-4100 x1426 or [becollins@salk.edu](mailto:becollins@salk.edu)



---

## SATURDAY, APRIL 16, 2016

The Institute opens its doors to the community April 16 for the 4th annual [Explore Salk](#) featuring behind-the-scenes lab tours, interactive activities, a Kids' Zone and talks presented by Salk scientists.



Visit <http://www.salk.edu/events/explore-salk/> for more event information.

---

## Wallpaper for your Electronic Devices

Download amazing Salk images for your smartphone, tablet or desktop.



**[CLICK HERE FOR INSTRUCTIONS AND DOWNLOADS »](#)**

