

Neuron, Volume 61
Supplemental Data
Spatial attention modulates center-surround interactions in
macaque visual area V4

Kristy A. Sundberg, Jude F. Mitchell, and John H. Reynolds

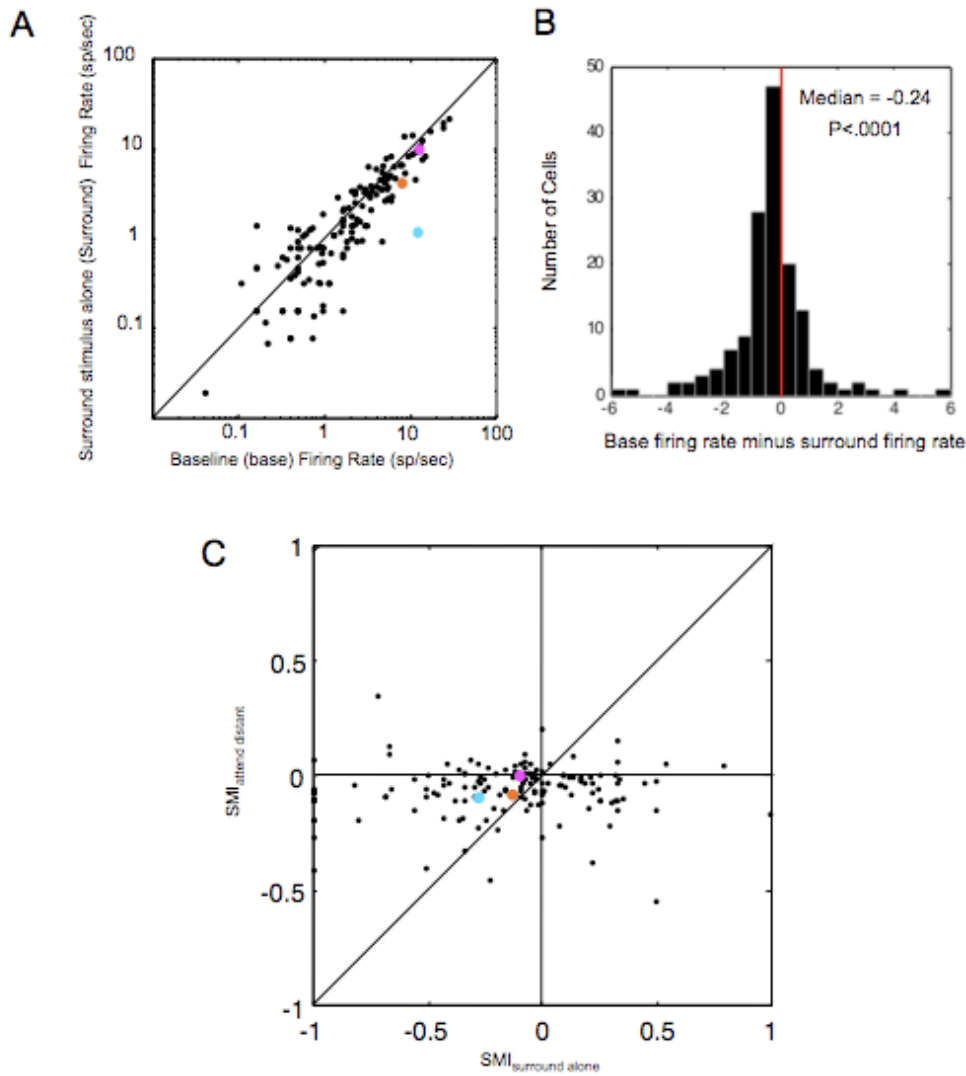


Figure S1: Baseline and surround stimulus alone responses. A. Scatter plot of baseline firing rate versus surround stimulus alone firing rate. Example cells from Figure 3 are indicated by colored icons. B. Population histogram of baseline firing rate minus surround stimulus alone firing rate. Panels A and B confirm that the application of our inclusion criteria successfully resulted in a population of neurons that did not give a significant response above baseline. If anything the population exhibited a slight suppression of baseline firing by a surround stimulus presented alone. C. Scatter plot of $SMI_{\text{surround alone}}$ versus $SMI_{\text{attend distant}}$. $SMI_{\text{surround alone}}$ was calculated using equation 2 except for the attend-distant conditions where the center stimulus was not present (0% contrast). Panel C confirms that there is no

relationship between the influence of the surround stimulus on baseline firing rate ($SMI_{\text{surround alone}}$) and the influence of the surround stimulus on the response of the neuron to the stimulus positioned within its RF ($SMI_{\text{attend distant}}$).